

Medical

The company has over 40 years experience in the design of public and private sector hospitals and health related facilities. These include health centres, surgeries, nursing homes, new hospitals and complex refurbishment and extensions.

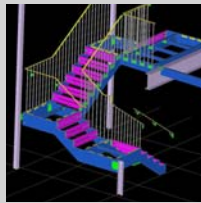


Retail

The heavy services requirements for buildings of this type are accommodated by our "whole building" design approach.

In recent years, we have worked on a variety of retail projects from city centre shops to out of town retail parks.

We often work for clients holding retail operations in need of refurbishment and are aware of the tight timescales required to keep trading operations functioning. We are experienced in dealing with the special structural requirements, of these facilities, including car parks, such as the need for flush, durable and true surfaces, correct natural lighting and structural solutions that can be rapidly installed.



Research & Development

Peter Dann endeavours to be at the forefront of research and development.

The work that is undertaken can be categorised into three main areas: modular structures, tented structures and software.



For further information please contact us:

CAMBRIDGE
NEWTON HOUSE
CAMBRIDGE ROAD
BARTON
CAMBRIDGE
CB23 7WJ

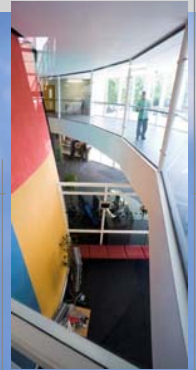
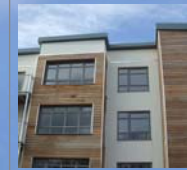
T: 01223 264688
F: 01223 264680

LONDON
9 CHARLOTTE STREET
LONDON
W1T 1RG

T: 020 7637 7870
F: 020 7637 7880

pd@peterdann.com
www.peterdann.com

PETER DANN LIMITED | CONSULTING ENGINEERS



Selected sectors...

Education

For many years, Peter Dann Limited has contributed to the development of educational facilities from teaching blocks, sports halls and theatres to laboratories and residential buildings.

We are experienced in the special requirements that apply to school buildings, including the need for a high quality environment with low maintenance, durable materials and the need to meet programme constraints imposed by the academic year.



Restoration

Restoration and refurbishment has been a significant area of activity for Peter Dann for many years.

We have a sympathetic approach towards sustainable and ecological design through the re-use of Materials and retention of existing structure. We aim to provide structural solutions that interfere as little as possible with the character and substance of historic properties.



Industrial

Projects have included warehousing, chemical works and swarf handling facilities as well as items as diverse as pressure vessels and radio masts. We have provided solutions to problems of vibration in machinery and regularly provide designs to resist seismic loads and other less common load cases.

We are able to apply an informed "basic principles" approach to unusual problems and always try to provide practical, imaginative and complete solutions from feasibility studies to fabrication details.

Commercial

We have undertaken many commercial developments, ranging from city centre schemes to large retail parks as well as high tech offices and headquarter buildings.

Ecologically sustainable techniques, such as green roofs and walls, water management and harvesting, and the uses of recycled and low embodied energy materials are finding wider application now that their commercial benefit has been demonstrated.



Leisure

We have extensive experience within the leisure industry and the continuing market trend towards greater investment in such developments has increased our involvement with projects of this type.

This has led to the design of a wide range of facilities including major fitness centres, football stands, cricket grounds, golf driving ranges and swimming pools, within both the public and private sectors.

Housing

Our design experience ranges from small domestic projects to large public and private sector housing development schemes with varying budgets. We have also provided student accommodation and modular housing systems.

We aim to promote a sustainable development strategy and take full account of lifetime costing and embodied energy to bring financial benefit to our clients as well as helping to protect the environment.

